



## Verifone Commander

### HOW TO TEST IF A SCANNER IS CONFIGURED TO RECOGNIZE A QR CODE

Testing the functionality of a 2D scanner requires a QR code be presented at a time when the Commander POS is at a state to accept the input. This assumes the scanner has been configured, and is set in the Ruby2/Topaz Maintenance menu as 2D capable.

If the site does not have Age Check turned on for specific items or departments, go to the section named “Configure ID Check” and “Configure PLU with ID Check” (next page).

With Age Check turned on :

#### **Test 2D Scanner**

1. Create a transaction using a department or PLU that requires Age Check.
2. When prompted for “ID CHECK REQUIRED”, scan the QR Code below.
3. If the 2D scanner is properly configured, the selected PLU or department value will be placed in the market basket on the screen, and the “ID CHECK REQUIRED” prompt will disappear.
4. Press “Error Correct” or Void transaction.



If the scanner does not read the QR code, your next steps are:

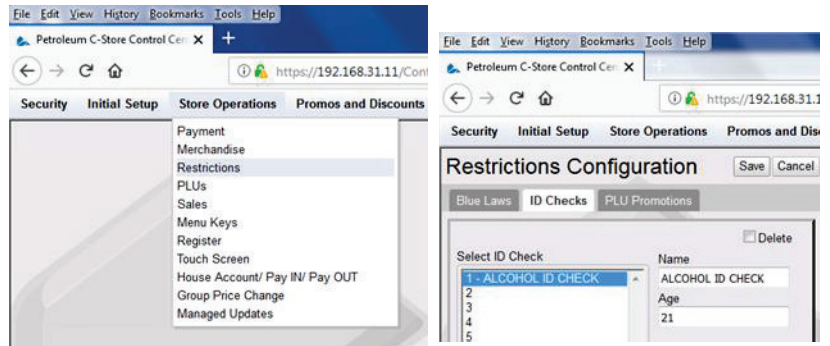
1. Contact your technician to ensure you have a 2D scanner.
2. If your technician indicates your scanner is a 2D scanner, have them assist you with configuring it to read the QR code.
3. If your technician indicates your scanner is not a 2D scanner, one can be purchased from the local VeriFone installer, or a pre-configured scanner can be purchased directly by utilizing a Phillips 66 discount program through Techquidation for \$238.





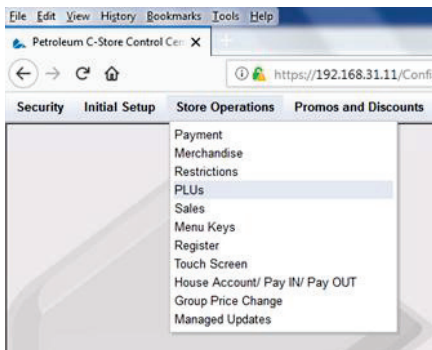
## Configure ID Check

1. From the bottom of the cashier screen, select CSR Functions, the select Configuration Manager and log in as Manager
2. Once logged in, go to Store Operations>Restrictions
3. If not already available, create an "ALCOHOL ID CHECK" line, set age to 21, then click "Save"



## Configure PLU with ID Check

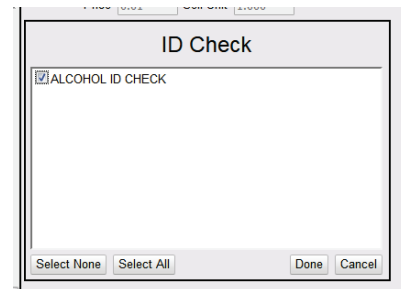
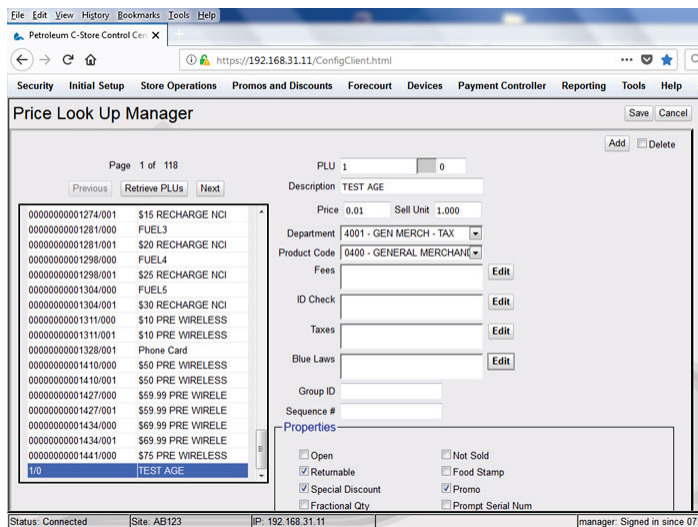
1. Go to Store Operations>PLUs



2. Click "Add" and set up PLU as follows (an existing PLU may also be used if desired)

3. Add the following values:

- a) PLU – 1 (or a number that is available)
- b) Description – Test Age
- c) Price – 0.01
- d) Sell Unit – 1.000
- e) Department – Any non-fuel department
- f) Product Code – Any non-fuel product code
- g) Click on "Edit" next to the ID Check box and select "ALCOHOL ID CHECK", then click "Done"



- h) Click "Save"
- i) Log out of Configuration Manager and Exit